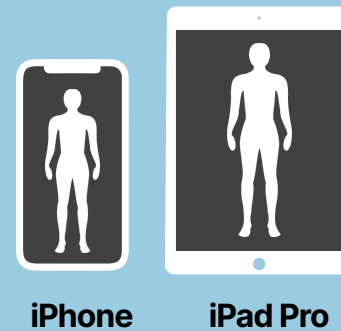


Proto App Live Beaming

Setting Up Your Phone

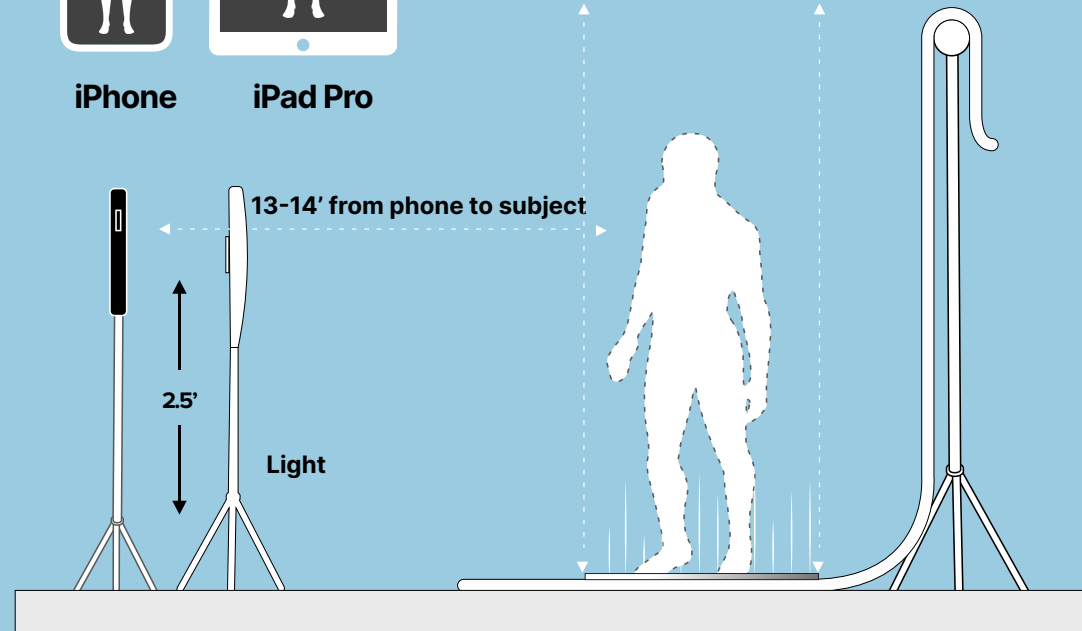
- 1 Set the height of the tripod 2.5 feet from phone to floor
- 2 Place your tripod 13-14 feet away from the subject
- 3 Use your fingers to tap and focus or pinch and zoom until actor is centered and in focus, as shown



- i Talent Placement:**
- For best effect, it is suggested that the subject be placed close to the background as the shadow created behind them helps tie the subject to the space.

What You'll Need:

- iPhone 13 (& above) or iPad Pro (5th Generation) & above
- Tripod with iPhone adapter
- Light
- White cyc backdrop
- Plexi Glass (the base to stand on)
- AirPods (Generation 3 & above)
- WiFi or cellular connection with 50+ Mbps upload & download speed



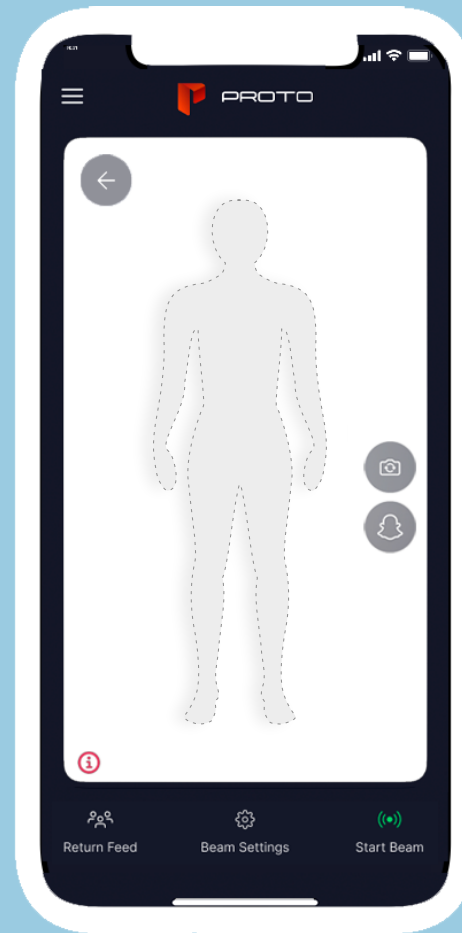
iPhone 13 recommended, **also works for iPad Pro*
(optional iPad adapter available)

Proto App Live Beaming

How to Use The App

- 1 Login into the Proto Beam App using your cloud account info
- 2 Select the device you'd like to stream to
- 3 Sync your AirPods or Bluetooth headset to your phone or iPad
- 4 Adjust your settings to your preference (see B)

Displays the return feed from your phone camera to the Epic. Share the return feed link to a laptop for a larger view — simply open the return feed & click the Share Button (📎)



Camera Mode | Tap the camera icon to switch between 3 settings:

1. Rear Facing
2. Front Facing
3. Telephoto - Zoomed in (Rear Facing)

C

D

Choose a Snap filter (optional)

E

Start or exit live beam

A

B

Adjust your Beam settings